

19 | 20 | 26 AUGUST 2017

COURSE BOOK



SMU

SINGAPORE MANAGEMENT
UNIVERSITY

RAFFLES
MARINA



Table of Contents



Regatta Committee	3
Tide Table	7
Race Signals	8
Course Flags	9
Class Flags & Starting Sequence	10
Courses	
IRC A & B, PY	
Short Courses	
Course 1 & 2	12
Course 3	14
Long Courses	
Course 4	16
Multihulls, SB20s, J/24	
Short Courses	
Course 1 & 2	18
Course 3 - 6	19
Windsurfing	
Short Courses	
Course 1 & 2	21
SMU Sailing Club	23
SMU Windsurfing Club	24
Raffles Marina	25
Sponsors	26

Regatta Committee



Regatta Chairmen

Ray Parry, Raffles Marina
Kenneth Tan, SMU

Regatta Advisors

Gordon Maxted, Raffles Marina
Justin Koh, Raffles Marina
Fidelis Tan, SMU
Jinella Chua, SMU

Race Secretariat

Lee Cheryl

Regatta Committee



Organising Committee

Chairman: Germaine Marie Lim

Vice-chairman: Lee Cheryl

SMU Sailing Club

Programmes Directors: Bernice Foo, Ng Zheng Wei

Logistics Directors: Isaac Peck, Isaac Chong,
Rebecca Goh

Marketing Directors: Nicole Quek, Angus Yong

Media Directors: Chua Zi Hao, Darryl Tan,
Chermian Lim

Manpower & Community
Service Directors: Kenny Chee, Joel Tay

SMU Windsurfing Club

President: Valerie Lim

Vice-president: Teo Jao Wei, Loh Jia Wei

Programmes Directors: Lester Chua

Marketing Directors: Zhou Quan

Manpower & Community
Service Directors: Keith Siew, Khairuddin Bin
Pahrulanam



Regatta Committee

Principal Race Officer

Richard Cai

IRC A & B, PY

Chief Race Officer

Richard Cai

Assistant Race Officers

Dale Ho Shen Hai

Matthew Ong

Nicole Ong

Ronnie Tay

Windsurfing

Chief Race Officer

Kevin Quek

Asistant Race Officer

Fernie Ng Hui Fen

Abdul Hadi

James Tan

Multihull, SB20, J/24

Chief Race Officer

Wong Ming Chee

Assistant Race Officers

Stephanie Soh Wan Ping

Andria Tay

Kong Yuen Loong

James Tan Lee Hock

Hansa 2.3 (Access 2.3)

Chief Race Officer

Jovin Tan

Regatta Committee



Protest Committee Chairman

Kira Pecherska

Protest Committee Members

Yuen Weng Thye

Richard Cai (Standby)

Wong Ming Chee (Standby)

PY Handicapping Committee

Justin Koh See Ghee

Gordon Maxted

Regatta Safety Officer

Ong Shean Boon

Regatta Videographer

Tang Teng Wei

Regatta Photographers

Howie Choo

Jolin Toh Yin Qi

Philip Au

James Fok

Victor Lim

William Ong

Chneo Kai Wen

Mohd. Nur Salikin

Tide Table



AUGUST 2017

HOURLY TIDAL HEIGHTS

HEIGHTS IN METRES

WEST TUAS

LAT 01° 20.7'N LONG 103° 38.0'E

DAY\HR	00	01	02	03	04	05	06	07	08	09	10	11	12	13	14	15	16	17	18	19	20	21	22	23
1	1.1	1.2	1.4	1.7	1.9	1.9	1.9	1.8	1.6	1.4	1.2	1.1	1.1	1.2	1.4	1.8	2.1	2.3	2.4	2.3	2.1	1.9	1.6	1.4
2	1.2	1.1	1.2	1.3	1.4	1.6	1.7	1.7	1.7	1.6	1.5	1.3	1.2	1.2	1.2	1.5	1.7	2.0	2.3	2.4	2.4	2.3	2.0	1.7
3	1.5	1.2	1.1	1.0	1.1	1.2	1.4	1.6	1.7	1.8	1.8	1.6	1.4	1.2	1.2	1.2	1.4	1.7	2.0	2.3	2.5	2.6	2.5	2.2
4	1.8	1.4	1.2	0.9	0.9	0.9	1.1	1.3	1.7	1.9	2.0	1.9	1.7	1.4	1.2	1.1	1.1	1.3	1.6	2.1	2.5	2.8	2.8	2.6
5	2.2	1.8	1.3	1.0	0.8	0.7	0.8	1.1	1.5	1.9	2.1	2.2	2.0	1.7	1.3	1.0	0.9	1.0	1.3	1.7	2.3	2.8	3.0	2.9
6	2.6	2.1	1.6	1.2	0.9	0.6	0.6	0.8	1.2	1.8	2.2	2.3	2.3	2.0	1.5	1.1	0.9	0.8	1.0	1.3	1.9	2.6	3.0	3.1
7	3.0	2.5	1.9	1.4	1.0	0.7	0.5	0.5	0.9	1.5	2.1	2.4	2.5	2.3	1.9	1.3	0.9	0.8	0.8	1.0	1.5	2.3	2.9	3.3
8	3.2	2.9	2.3	1.6	1.1	0.8	0.6	0.5	0.6	1.2	1.9	2.4	2.5	2.5	2.2	1.6	1.1	0.8	0.7	0.8	1.1	1.8	2.6	3.2
9	3.4	3.1	2.7	2.0	1.3	0.9	0.7	0.5	0.5	0.8	1.5	2.2	2.6	2.6	2.4	2.0	1.4	0.9	0.7	0.7	0.9	1.3	2.2	3.0
10	3.4	3.3	3.0	2.4	1.7	1.1	0.7	0.5	0.4	0.5	1.1	1.9	2.5	2.7	2.6	2.3	1.7	1.1	0.8	0.6	0.7	1.0	1.6	2.5
11	3.2	3.4	3.2	2.7	2.0	1.3	0.9	0.6	0.5	0.4	0.8	1.5	2.3	2.7	2.7	2.5	2.1	1.5	1.0	0.6	0.6	0.7	1.1	1.9
12	2.7	3.2	3.3	3.0	2.4	1.7	1.1	0.7	0.5	0.5	0.6	1.2	1.9	2.6	2.8	2.7	2.4	1.8	1.2	0.8	0.6	0.6	0.8	1.3
13	2.1	2.8	3.1	3.0	2.7	2.1	1.4	0.9	0.6	0.5	0.6	0.9	1.6	2.3	2.7	2.8	2.6	2.2	1.6	1.1	0.8	0.6	0.6	0.9
14	1.5	2.2	2.7	2.9	2.7	2.3	1.7	1.2	0.8	0.7	0.6	0.8	1.2	1.9	2.5	2.7	2.7	2.5	2.0	1.5	1.1	0.8	0.7	0.7
15	1.0	1.5	2.1	2.5	2.5	2.4	2.0	1.5	1.1	0.9	0.8	0.8	1.0	1.5	2.0	2.5	2.7	2.7	2.4	2.0	1.5	1.2	0.9	0.8
16	0.8	1.0	1.4	1.8	2.1	2.2	2.1	1.9	1.5	1.2	1.0	0.9	1.0	1.2	1.6	2.0	2.4	2.7	2.7	2.5	2.1	1.7	1.3	1.1
17	0.9	0.8	1.0	1.2	1.5	1.8	2.0	2.0	1.9	1.6	1.4	1.2	1.1	1.1	1.2	1.5	1.9	2.3	2.6	2.7	2.6	2.3	2.0	1.6
18	1.2	0.9	0.8	0.8	0.9	1.2	1.5	1.8	2.0	2.0	1.9	1.6	1.4	1.2	1.1	1.1	1.3	1.7	2.2	2.7	2.9	2.8	2.6	2.2
19	1.7	1.3	0.9	0.7	0.6	0.6	0.9	1.4	1.9	2.1	2.2	2.1	1.8	1.4	1.1	1.0	1.0	1.2	1.6	2.2	2.8	3.1	3.1	2.8
20	2.4	1.8	1.2	0.8	0.6	0.4	0.4	0.8	1.5	2.0	2.3	2.4	2.3	1.9	1.4	1.0	0.8	0.9	1.0	1.5	2.3	3.0	3.3	3.2
21	2.9	2.4	1.7	1.1	0.7	0.5	0.3	0.4	0.9	1.7	2.3	2.5	2.5	2.3	1.8	1.2	0.9	0.7	0.8	1.0	1.6	2.5	3.2	3.4
22	3.3	2.9	2.3	1.5	1.0	0.6	0.4	0.2	0.4	1.2	2.0	2.5	2.7	2.6	2.2	1.6	1.1	0.7	0.7	0.7	1.0	1.8	2.7	3.4
23	3.5	3.2	2.8	2.0	1.3	0.9	0.5	0.3	0.2	0.7	1.6	2.4	2.7	2.7	2.5	2.0	1.4	0.9	0.6	0.6	0.7	1.1	2.0	3.0
24	3.4	3.4	3.1	2.5	1.7	1.1	0.7	0.5	0.3	0.4	1.1	2.0	2.6	2.8	2.7	2.4	1.7	1.1	0.7	0.6	0.6	0.7	1.4	2.3
25	3.1	3.3	3.2	2.8	2.1	1.4	0.9	0.6	0.4	0.4	0.8	1.6	2.4	2.8	2.8	2.6	2.1	1.4	0.9	0.6	0.5	0.6	0.9	1.7
26	2.6	3.1	3.1	2.9	2.4	1.7	1.2	0.8	0.6	0.5	0.6	1.3	2.1	2.7	2.8	2.7	2.3	1.8	1.2	0.8	0.6	0.6	0.7	1.2
27	2.0	2.6	2.9	2.8	2.5	2.0	1.4	1.0	0.7	0.6	0.7	1.1	1.8	2.5	2.8	2.7	2.5	2.1	1.5	1.0	0.7	0.6	0.7	0.9
28	1.5	2.1	2.5	2.6	2.4	2.1	1.6	1.2	0.9	0.8	0.8	1.0	1.5	2.1	2.6	2.7	2.6	2.3	1.8	1.4	1.0	0.8	0.8	0.8
29	1.2	1.7	2.1	2.2	2.2	2.0	1.7	1.4	1.1	0.9	0.9	1.0	1.3	1.8	2.3	2.6	2.6	2.4	2.1	1.7	1.4	1.1	1.0	0.9
30	1.0	1.3	1.6	1.9	1.9	1.9	1.7	1.5	1.3	1.1	1.1	1.1	1.2	1.5	1.9	2.2	2.4	2.4	2.3	2.1	1.8	1.5	1.3	1.2
31	1.1	1.1	1.3	1.5	1.6	1.6	1.6	1.6	1.5	1.4	1.3	1.3	1.3	1.4	1.6	1.9	2.1	2.2	2.3	2.3	2.2	2.0	1.7	1.5

Race Signals

RACE SIGNALS

The meanings of visual and sound signals are stated below. An arrow pointing up or down (↑ ↓) means that a visual signal is displayed or removed. A dot (•) means a sound; five short dashes (-----) mean repetitive sounds; a long dash (—) means a long sound. When a visual signal is displayed over a class flag, the signal applies only to that class.

Postponement Signals



AP Races not started are *postponed*. The warning signal will be made 1 minute after removal unless at that time the race is *postponed* again or *abandoned*.



AP over H Races not started are *postponed*. Further signals ashore.



AP over A Races not started are *postponed*. No more racing today.



AP over a numeral pennant 1-6 *Postponement* of 1-6 hours from the scheduled starting time.



Abandonment Signals



N All races that have started are *abandoned*. Return to the starting area. The warning signal will be made 1 minute after removal unless at that time the race is *abandoned*.



N over H All races are *abandoned*. Further signals ashore.



N over A All races are *abandoned*. No more racing today.

Preparatory Signals



P Preparatory signal.



I Rule 30.1 is in effect.



Z Rule 30.2 is in effect.



Black flag. Rule 30.3 is in effect.

Recall Signals

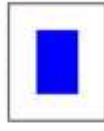


X Individual recall.



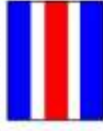
First Substitute General recall. The warning signal will be made 1 minute after removal.

Shortened Course



S The course has been shortened. Rule 32.2 is in effect.

Changing the Next Leg



C The position of the next *mark* has been changed:



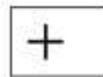
to starboard:



to port;

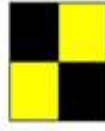


to decrease the length of the leg;



to increase the length of the leg.

Other Signals



L Ashore: A notice to competitors has been posted.



M The object displaying this signal replaces a missing *mark*.



Y Wear a personal flotation device.



Blue flag or shape. This race committee boat is in position at the finishing line.

Course Flags

COURSE

FLAG

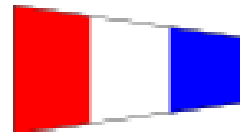
1



2



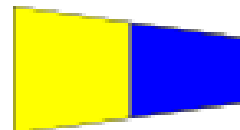
3



4



5



6



Class Flags - Keelboats



CLASS	FLAG
IRC A (^E' Flag)	
IRC B (^G' Flag)	
PY (^V' Flag)	
SB20 (^R' Flag)	
J/24 (^K' Flag)	
Beach Catamaran	
Trimaran	

Starting Sequence

Starting Sequence of races will follow the order as shown above with starts being rolling starts unless dictated otherwise by race committee through communications across VHF.

Class Flags - Windsurfing



CLASS

FLAG

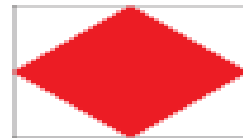
4.0m² Novice (Women)
4.0m² Novice (Men)
(^J' Flag)



5.5m² Intermediate (Women)
6.0m² Intermediate (Men)
(^O' Flag)



7.8m² NeilPryde RS:One
(Mixed)
(^F' Flag)



7.8m² NeilPryde RS:One
(Open)
(RS:One Class Flag)

RS:One

IRC A & B, PY – Course 1-2



Course	Route	Time Limit (Minutes)
1	Start – M1 – M2 – M1 – Finish	90
2	Start – M1 – M2 – M1 – M2 – M1 – Finish	90

Remarks:

Round all marks to Port unless otherwise stated.

Time limit:

Boats failing to finish within the time limit or 30mins after the third boat of that class sails the course and finishes, whichever is longer will be scored "Did Not Finish". This changes rules 35 and A4.

Start

Between a staff displaying an orange flag on Committee Boat with **Raffles Marina Flag** & Pink round buoy

M1

Orange conical buoy

M2

Orange conical buoy with Blue cover

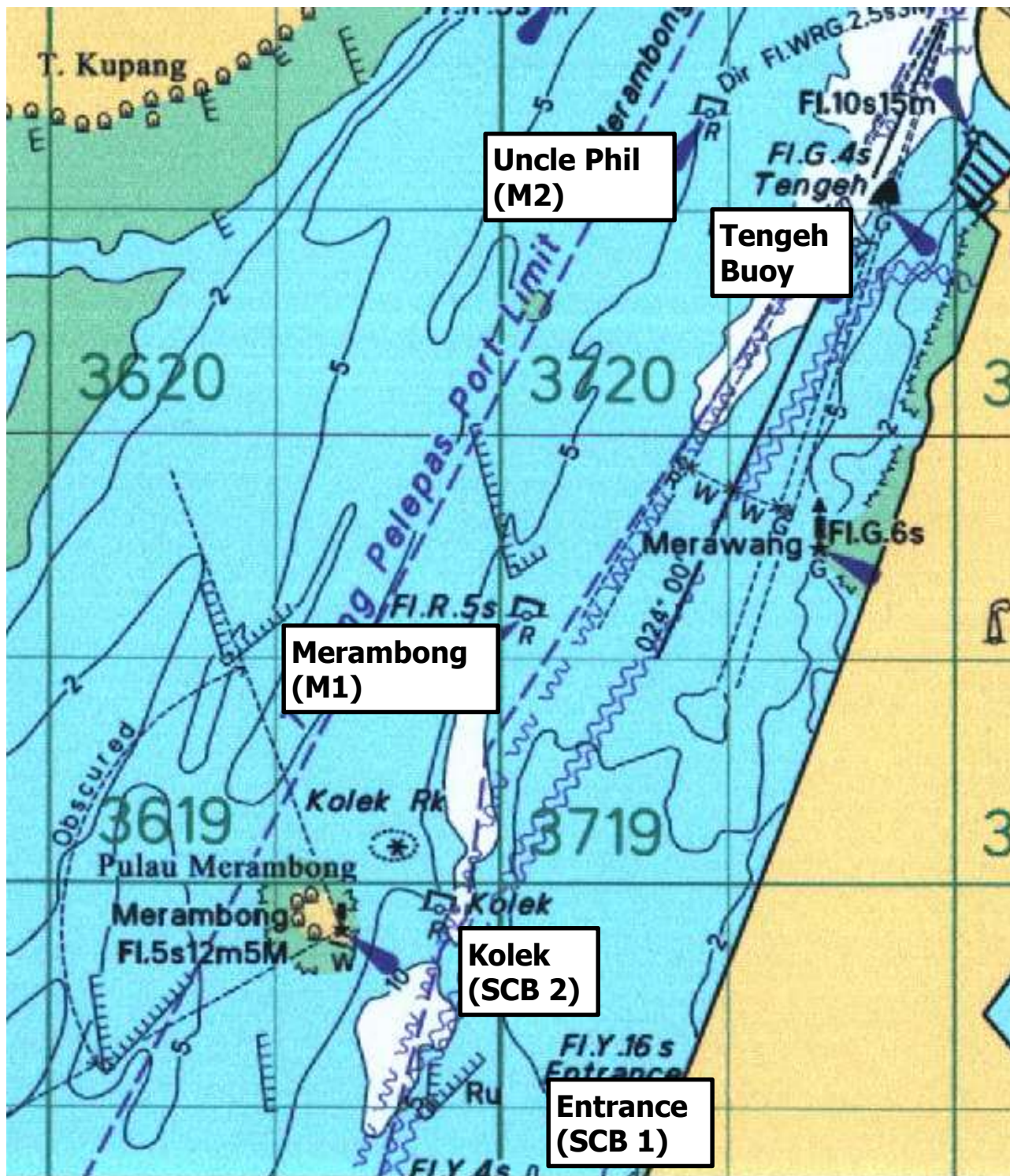
Finish

Between a staff displaying a blue flag on Committee Boat with **Raffles Marina Flag** & Pink round buoy



START / FINISHING BOAT

Race Chart



IRC A & B, PY – Course 3



Course	Route			Time Limit (Minutes)
3	Start	Between a staff displaying an orange flag on Committee Boat with Raffles Marina Flag and Pink round buoy		180
	Alert Shoal buoy	Keep to Starboard	Lat 1°17'00 N Long 103°36.40' E	
	P21 buoy (gate)	Between Mark Boat and P21 Buoy	Lat 1°15.85' N Long 103°36.00' E	
	TVE 5 buoy	Round to Port	Lat 1°13.08' N Long 103°36.29' E	
	P21 buoy (gate)	Between Mark Boat and P21 Buoy	Lat 1°15.85' N Long 103°36.00' E	
	Alert Shoal buoy	Keep to Port	Lat 1°17'00 N Long 103°36.40' E	
	Finish	Between a staff displaying a blue flag on Committee Boat and Blue round buoy.		Approx. 16 NM

Remarks:

Round all marks to Port unless otherwise stated.

Time limit:

Boats failing to finish within the time limit or 30mins after the third boat of that class sails the course and finishes, whichever is longer will be scored "Did Not Finish". This changes rules 35 and A4.

If less than 30% (rounded up to the nearest whole number) of a class reach the Finish line (or shorten course finish) within the time limit, then the race committee may take all places for that class from the previous mark.

Race Chart



IRC A & B, PY – Course 4



Course	Route			Time Limit (Minutes)
4	Start	Between a staff displaying an orange flag on Committee Boat with Raffles Marina Flag and Pink round buoy		240
	Alert Shoal buoy	Keep to Starboard	Lat 1°17'00 N Long 103°36.40' E	
	P21 buoy (gate)	Between Mark Boat and P21 Buoy	Lat 1°15.85' N Long 103°36.00' E	
	TVE 5 buoy	Round to Port	Lat 1°13.08' N Long 103°36.29' E	
	TVE 2 buoy	Round to Port	Lat 1°12.58' N Long 103°38.21' E	
	TVE 5 buoy	Round to Starboard	Lat 1°13.08' N Long 103°36.29' E	
	P21 buoy (gate)	Between Mark Boat and P21 Buoy	Lat 1°15.85' N Long 103°36.00' E	
	Alert Shoal buoy	Keep to Port	Lat 1°17'00 N Long 103°36.40' E	
	Finish	Between a staff displaying a blue flag on Committee Boat and Blue round buoy.		Approx. 20 NM

Remarks:

Round all marks to Port unless otherwise stated.

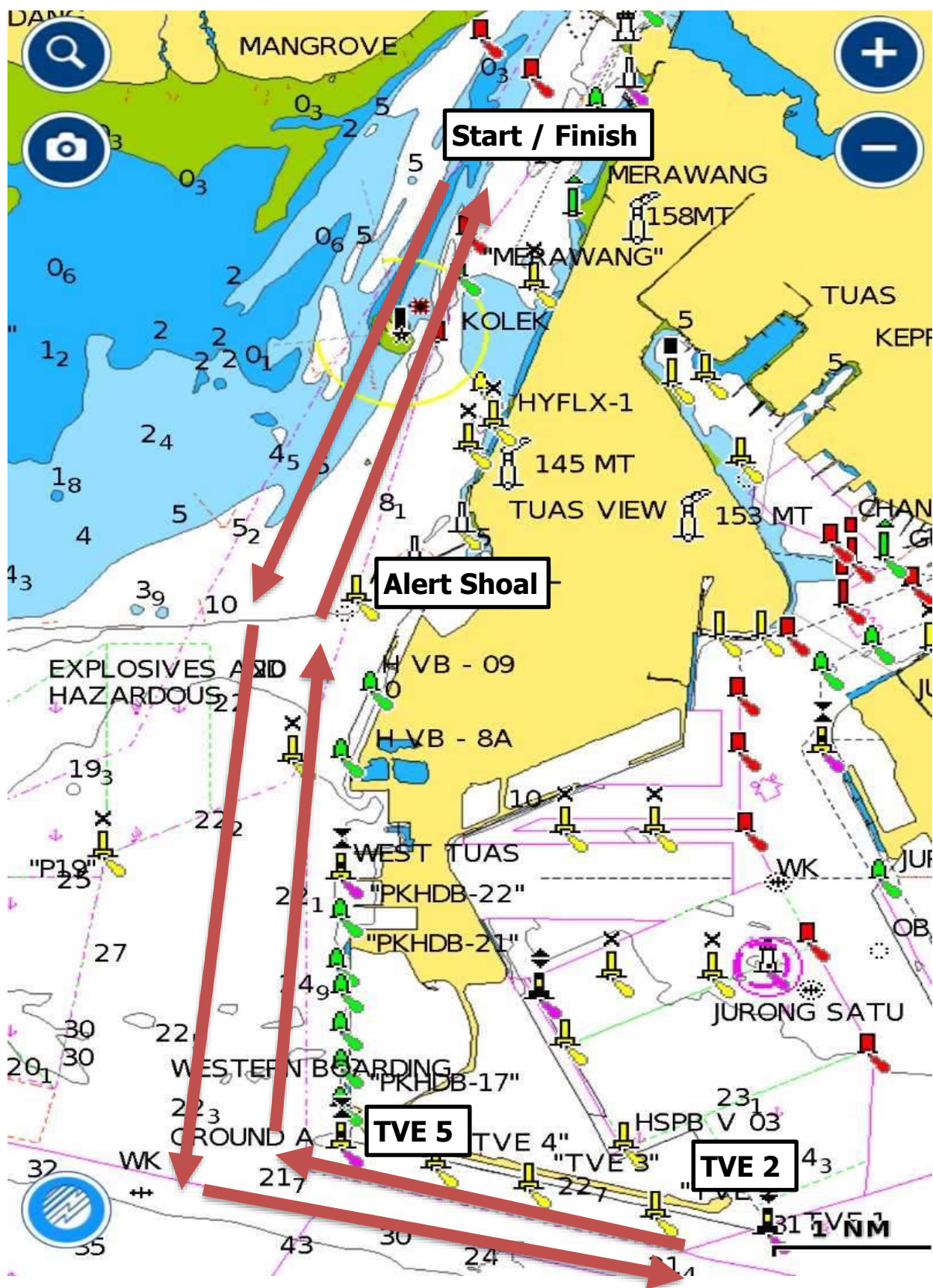
Time limit:

Boats failing to finish within the time limit or 30mins after the third boat of that class sails the course and finishes, whichever is longer will be scored "Did Not Finish". This changes rules 35 and A4.

If less than 30% (rounded up to the nearest whole number) of a class reach the Finish line (or shorten course finish) within the time limit, then the race committee may take all places for that class from the previous mark.

IRC A & B, PY – Courses 4

Race Chart



Multihull, SB20, J/24 – Course 1-2



Course	Route	Time Limit (Minutes)
1	Start – M1 – M2 – M1 – Finish	90
2	Start – M1 – M2 – M1 – M2 – M1 – Finish	90

Remarks:

Round all marks to Port unless otherwise stated.

Time limit:

Boats failing to finish within the time limit or 30mins after the third boat of that class sails the course and finishes, whichever is longer will be scored "Did Not Finish". This changes rules 35 and A4.

Start

Between a staff displaying an orange flag on Committee Boat with **SMU Flag** & Pink round buoy



M1

Orange conical buoy

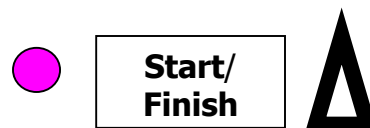
M2

Orange conical buoy with Blue cover



Finish

Between a staff displaying a blue flag on Committee Boat with **SMU Flag** & Pink round buoy



**START / FINISHING
BOAT**

Multihull, SB20, J/24 – Course 3-6



Course	Route	Time Limit (Minutes)
3	Start – Kolek – Entrance – Finish	90
4	Start – Merambong – Tengeh Buoy – U. Phil – Merambong – Finish	120
5	Start – Kolek – Entrance – U. Phil – Merambong – Finish	120
6	Start – Kolek – Tengeh Buoy – U. Phil – Kolek – Finish	120

Remarks:

Round all marks to Port unless otherwise stated.

Time limit:

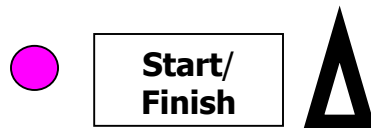
Boats failing to finish within the time limit or 30mins after the third boat of that class sails the course and finishes, whichever is longer will be scored "Did Not Finish". This changes rules 35 and A4.

Start

Between a staff displaying an orange flag on Committee Boat with **SMU Flag** & Pink round buoy

Finish

Between a staff displaying a blue flag on Committee Boat with **SMU Flag** & Pink round buoy



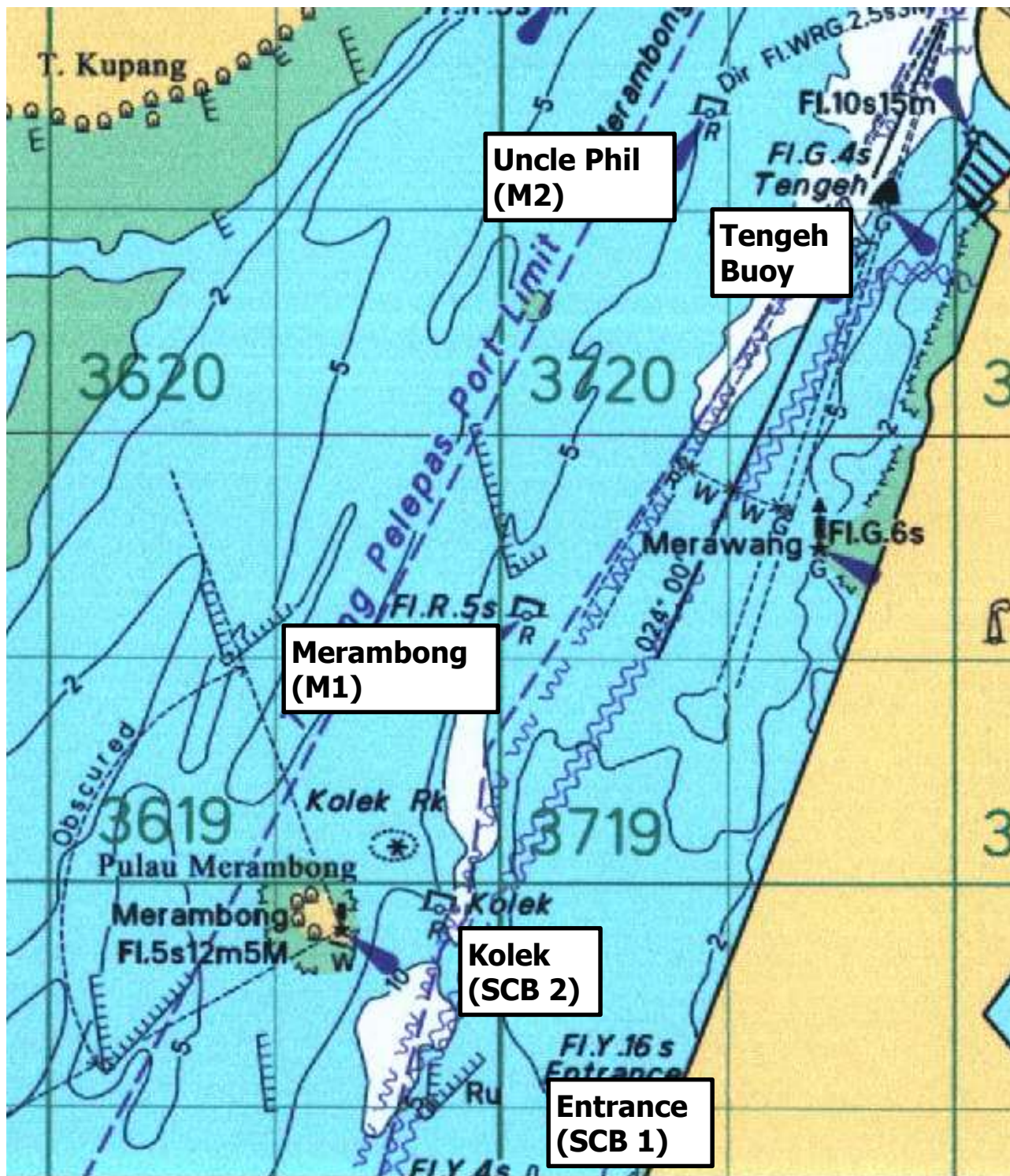
START / FINISHING BOAT



Multihull, SB20, J/24 – Course 1-6



Race Chart



Windsurfing – Courses 1-2



Course	Route	Time Limit (Minutes)
1	Start – M1 – M2 – M1 – M3 – Finish	40
2	Start – M1 – M2 – M1 – M2 – M1 – M3 – Finish	40

Remarks:

Round all marks to Port unless otherwise stated.

M2 is a Gate; to pass in between both conical buoys from windward direction

Time limit:

Boats failing to finish within the time limit or 30mins after the third boat of that class sails the course and finishes, whichever is longer will be scored "Did Not Finish". This changes rules 35 and A4.

Start

Between a staff displaying an orange flag on Committee Boat & Pink round buoy (M3)

M1

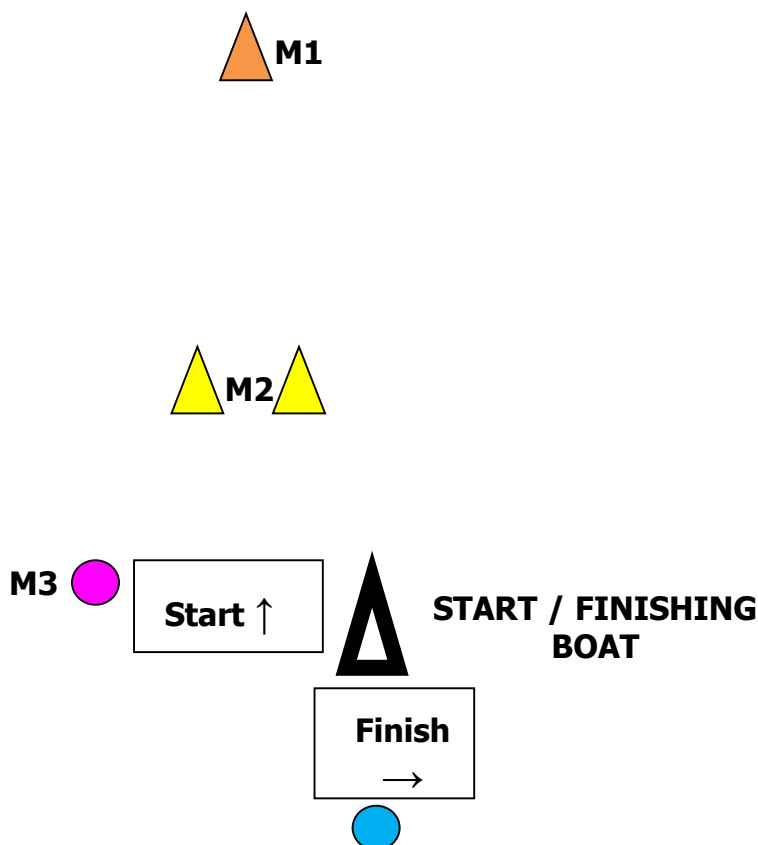
Orange conical buoy

M2 (Gate)

Two Yellow Conical buoys

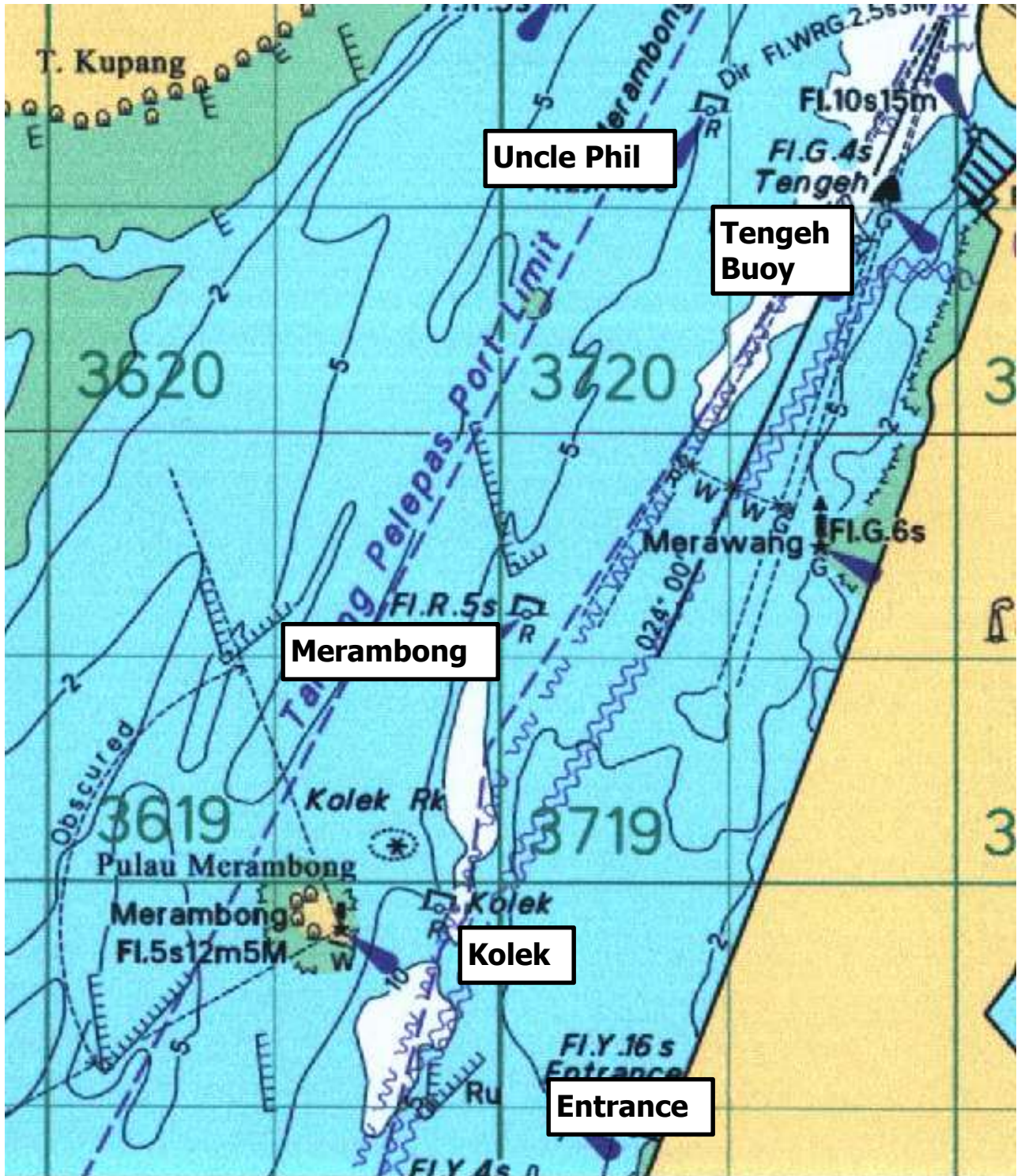
Finish

Between a staff displaying a blue flag on Committee Boat & Blue round buoy



Windsurfing – Courses 1-2

Race Chart





About SMU Sailing

The SMU Sailing Club was founded in 2004 by a group of friends who enjoyed nothing more than to be out on the water together. Years later, the club has grown to accommodate an expanded fleet of boats and membership but our sailors have always kept our underlying principles of friendship, teamwork and passion while creating waves in the sailing community all around the world.

With the invaluable support of Singapore Management University's (SMU) Office of Student Life, SMU Sailing has gone where no other university sports club has gone before. Over the years we have made many friends of sailing and have impressed sailors from all over the world with our enthusiasm, passion and eagerness to learn from the sport.

Being a university sports club, SMU Sailing is focused on the development of leadership qualities in our sailors through the numerous opportunities to organize, plan and run events. We aim to enhance the critical skills that sailors learn on the water so that they can apply them in the corporate world.

The SMU Sailing club continues to grow from strength to strength as we recruit both experienced and non experienced sailors from the SMU community annually. The club competes regularly in many local regattas as well as regattas held in Thailand, Malaysia and Indonesia. In addition, team also travels to China and Europe for major regattas.

Above all, the SMU Sailing club is more than just a sports team. We are a family. Visit us at <http://smusailing.com/>.



About SMU Windsurfing

SMU Windsurfing Club was founded in 2004, and has since grown to be one of the top tertiary teams in Singapore. Its vision is to be the leading windsurfing club in Singapore, recognised for inclusivity, vibrancy, and excellence. To that end, the club constantly strives to bring the amazing experience of windsurfing to the SMU community and beyond.

With the help and support from Singapore Management University's Office of Student Life, as well as the SMU Sports Union, SMU Windsurfing strives to continually be the leading tertiary windsurfing club in Singapore, as well as to expose the SMU community to windsurfing.

With a committed and tightly knitted team of less than 25 members, SMU Windsurfing has worked hard to clinch the Inter-Tertiary Championship title for four consecutive years from 2013 to 2016, and is determined to clinch the title again during the upcoming 20th Western Circuit Sailing Regatta.

Beyond racing, SMU Windsurfing also builds the team's character and leadership skills by exposing them to various opportunities.

Visit us at [facebook.com/SMUWindsurfing](https://www.facebook.com/SMUWindsurfing)



About Raffles Marina

Think of nautical lifestyle and marine leisure sports, and you automatically think of Raffles Marina.

Raffles Marina is a full service boating haven with the trappings of a prestigious country club and the pleasures of a quality resort.

Protected by a solid breakwater, the minimum depth alongside is 10 metres while the approach channel has a minimum depth of 5 metres at low tide. This enables yachts to berth safely at all times of the tide. Shore power services, freshwater supply, TV antennae connectors and WiFi access, are also available.

A full boat service yard, spacious showers and comfortable changing rooms, sit alongside laundry service facilities and hotel bedrooms to ensure all your requirements are well provided for.

Our walk-on berths can accommodate boats up to 65 feet while the Boathouse has 208 dry-berths for boats of up to 35 feet. In addition, when you berth with us, you will also enjoy our clubhouse facilities, including a gym, 2 restaurants, a pub and a magnificent landscaped pool and Jacuzzi area.

With Tuas Link MRT station immediately next door to the marina, Raffles Marina is your gateway to the wonders of Singapore and access point to the dramatic waters and islands of the Aseanareran region.

Visit us at <https://www.rafflesmarina.com.sg/>



Organized
by:



Sponsored
by:



Sanctioned
by:

